

# Load Balancing Guardrails

Keeping Your Heavy Traffic on the Road to Low Response Times

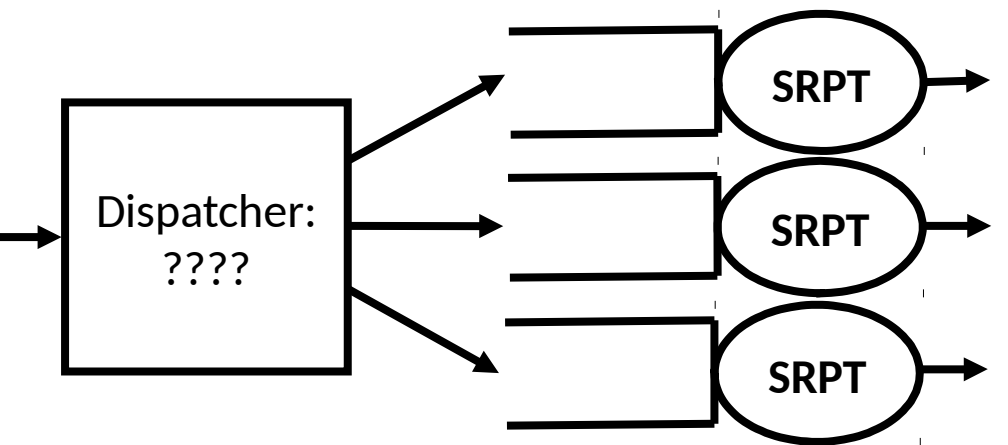
Isaac Grosf, Ziv Scully, Mor Harchol-Balter

Carnegie Mellon University

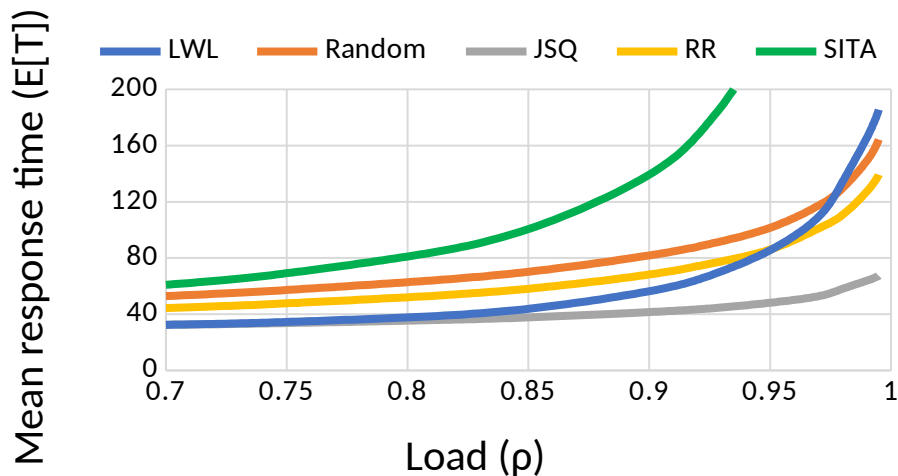
Q: How do we optimally configure a load balancer?

Q1: How do we dispatch?

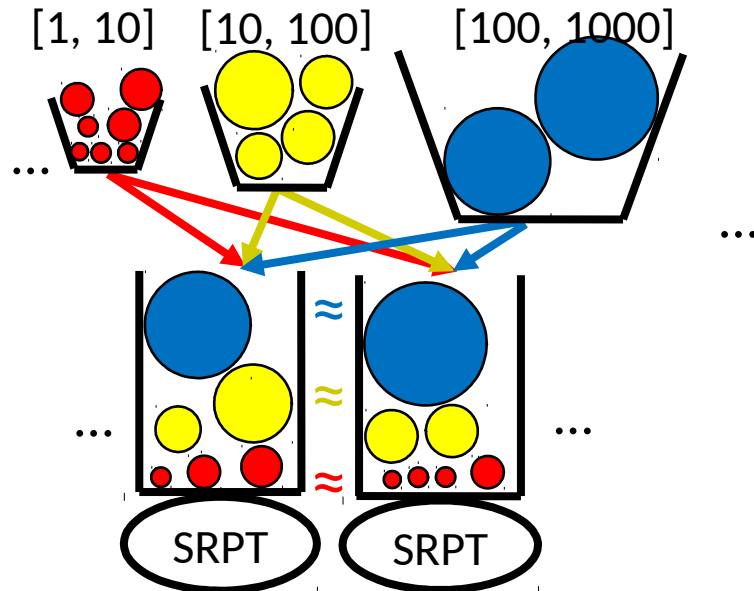
Q2: How do we schedule?



Traditional policies aren't always good



Solution: add **Guardrails**



Guardrails: Analytically Guaranteed

